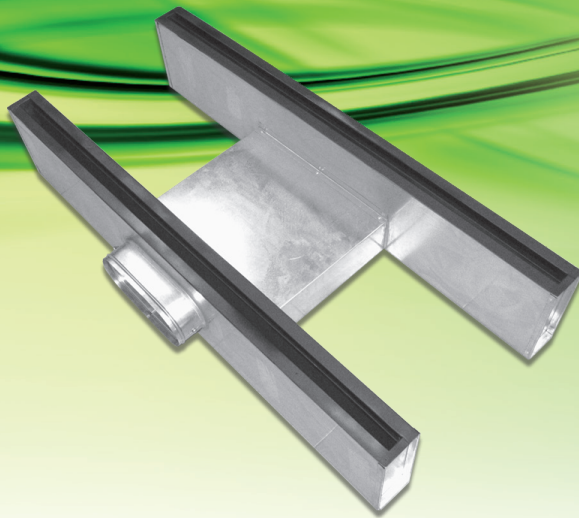


# LTD Light Troffer Ceiling Diffuser



**ASLI Light Troffer Diffusers (LTD)** are designed to fit virtually any available light fixture with air diffuser capabilities. The coordination of air distribution and lighting into a single, efficient ceiling unit, giving a pleasing appearance. The LTD deflectors direct the supply air away from the light fitting as to prevent condensation. LTD are excellent for VAV system as they have high induction ratio and strong horizontal air pattern. Standard features include volume damper and locking tabs to hold the diffuser to the light fixture.

## Materials

- LTD-S-S** Single sided/side inlet
- LTD-D-S** Double sided/side inlet
- LTD-D-T** Double sided/top inlet

## Surface Finish

- Mill galvanized
- Matt black on the slot diffuser face.

## Standard Inlet Size

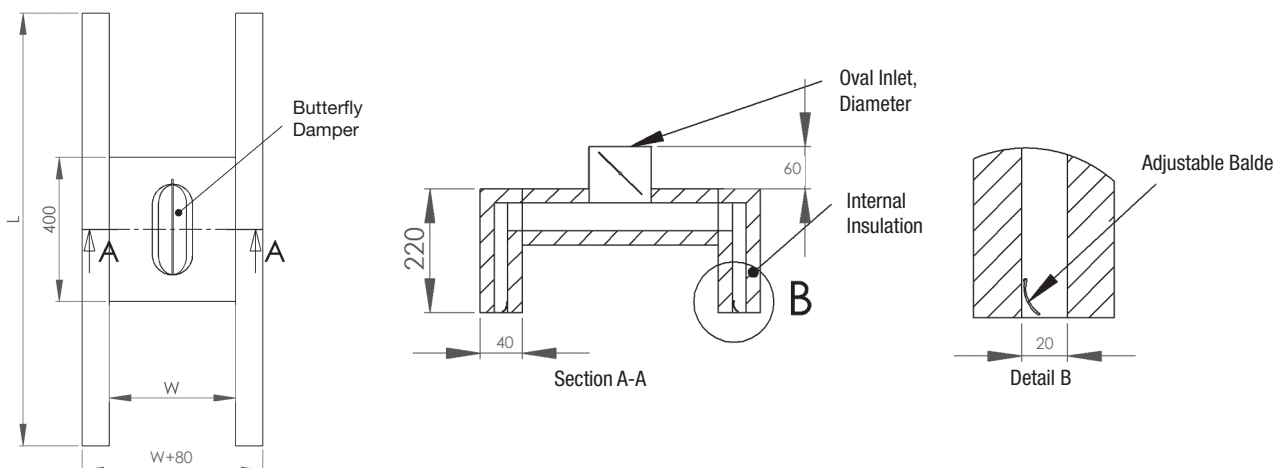
- Unit : mm
- Ø 100 / Ø 125 / Ø 150 / Ø 200

Part	Standard	Optional
Casing	0.5mm Galvanized Steel	0.7mm Galvanized Steel
Blade	0.5mm Galvanized Steel	Extruded Aluminum
Insulation	PE foam	Fiberglass

## Features

- Custom manufactured to fit all air handling light fixtures.
- Volume control damper at the inlet to control air volume.
- Air pattern adjustable from horizontal to vertical through deflectors.
- Oval inlet available.
- Supply or return air application.
- Internal insulation to prevent condensation.

## LTD Physical Dimension *Unit : mm*



# LTD Light Troffer Diffuser

## LTD Performance Data *LTD-S-S (600mm)*

Inlet Size (mm)	Throw (m)	CMH	70	90	110	130	150	165	180	220
		H	1.8 - 3.0	2.3 - 3.7	2.4 - 4.2	2.5 - 4.5	2.7 - 4.8	2.9 - 5.2	3.2 - 5.5	3.5 - 5.7
		V	1.2 - 1.8	1.7 - 2.1	1.9 - 2.2	2.0 - 2.2	2.4 - 2.7	2.5 - 2.8	2.6 - 2.9	2.8 - 3.2
Ø 100	Tot. Press. (mmAq)	H	1.9	2.6	3.4	4.1	5.3	6.3	7.3	8.0
		V	1.8	2.5	3	3.8	4.9	5.8	6.9	7.5
	NC	H	-	-	25	29	33	36	39	41
		V	-	-	25	29	33	36	39	41
Ø 150	Tot. Press. (mmAq)	H	1.8	2.5	3.3	4.0	5.2	6.2	7.2	7.9
		V	1.7	2.2	2.9	3.7	4.8	5.7	6.8	7.3
	NC	H	-	-	24	28	32	35	38	40
		V	-	-	24	28	32	35	38	40
Ø 200	Tot. Press. (mmAq)	H	1.7	2.4	3.1	3.8	4.8	5.8	6.8	7.7
		V	1.6	2.2	2.8	3.5	4.5	5.4	6.2	7.6
	NC	H	-	-	23	27	31	34	37	38
		V	-	-	23	27	31	34	37	38

## LTD Performance Data *LTD-S-S (1200mm)*

Inlet Size (mm)	Throw (m)	CMH	110	150	180	220	250	290	320	360
		H	0.5 - 2.0	0.9 - 2.4	1.2 - 2.6	1.5 - 2.7	1.6 - 3.1	1.8 - 3.4	2.0 - 3.6	2.3 - 3.9
		V	1.2 - 1.4	1.5 - 1.8	1.7 - 2.0	2.0 - 2.3	2.2 - 2.5	2.3 - 2.6	2.4 - 2.7	2.6 - 3.0
Ø 100	Tot. Press. (mmAq)	H	1.7	2.6	3.9	5.3	6.7	8.6	9.5	10.5
		V	1.5	2.4	3.4	4.9	6.3	8.2	9.3	10.2
	NC	H	-	-	23	28	32	36	40	41
		V	-	-	22	27	32	36	39	40
Ø 150	Tot. Press. (mmAq)	H	1.5	2.2	3.2	4.3	5.2	6.8	7.3	8.5
		V	1.4	2.0	2.9	4.0	5.0	6.4	7.2	8.4
	NC	H	-	-	25	29	32	36	38	39
		V	-	-	25	29	32	36	38	39
Ø 200	Tot. Press. (mmAq)	H	1.3	1.9	2.7	3.4	4.4	5.7	6.5	7.3
		V	1.2	1.7	2.5	3.2	4	5.3	6.2	7.1
	NC	H	-	-	22	25	29	33	38	39
		V	-	-	22	24	28	32	37	39

- Throw is based on terminal velocities of 0.5m/s – 0.25m/s respectively.
- NC value is based on a room absorption of 10 dB, re 10<sup>-12</sup> watts.
- Dash (-) indicates NC less than 20.
- H indicates horizontal throw, V indicates vertical throw.

# LTD Light Troffer Diffuser

## LTD Performance Data LTD-D-S (600mm)

Inlet Size (mm)	Throw (m)	CMH	110	140	165	180	220	250	290	320
		H	1.2 - 2.7	1.8 - 3.0	2.0 - 3.3	2.3 - 3.7	2.4 - 4.3	2.5 - 4.7	2.7 - 4.9	3.0 - 5.5
	V	1.4 - 1.7	1.5 - 1.8	1.8 - 2	1.9 - 2.1	2.0 - 2.2	2.2 - 2.4	2.5 - 2.7	2.7 - 3.2	
Ø 100	Tot. Press. (mmAq)	H	1.9	3.2	4.0	4.9	7.1	9.5	13.5	14.2
		V	1.6	2.8	3.6	4.5	6.6	8.8	12.6	13.2
	NC	H	-	22	27	31	35	40	44	46
		V	-	21	25	28	32	37	40	42
Ø 150	Tot. Press. (mmAq)	H	1.7	2.8	3.5	4.2	6.1	8.2	11.8	12.4
		V	1.4	2.4	3.1	3.8	5.6	7.5	10.9	11.5
	NC	H	-	22	27	31	35	40	44	46
		V	-	21	25	28	32	37	40	42
Ø 200	Tot. Press. (mmAq)	H	1.5	2.4	3.1	3.7	5.4	7.2	10.6	11.5
		V	1.2	2.0	2.7	3.3	4.9	6.5	9.7	10.3
	NC	H	-	-	27	31	35	40	44	46
		V	-	-	25	28	32	37	40	42

## LTD Performance Data LTD-D-S (1200mm)

Inlet Size (mm)	Throw (m)	CMH	220	250	290	320	360	430	500	540
		H	0.5 - 2.0	0.7 - 2.2	0.9 - 2.4	1.1 - 2.5	1.2 - 2.6	1.5 - 2.7	1.6 - 3.1	1.8 - 3.5
	V	1.2 - 1.4	1.3 - 1.6	1.5 - 1.8	1.6 - 1.9	1.8 - 2.0	2.0 - 2.3	2.1 - 2.5	2.2 - 2.7	
Ø 100	Tot. Press. (mmAq)	H	3.8	5.0	6.2	7.6	9.2	12.3	17.8	18.2
		V	3.3	4.3	5.8	7.1	8.7	12.3	16.5	17.1
	NC	H	23	29	34	36	39	44	48	50
		V	20	24	29	32	35	40	45	47
Ø 150	Tot. Press. (mmAq)	H	2.7	3.6	4.7	5.8	7.3	9.8	13.2	14.2
		V	2.3	3.0	4.1	4.9	6.0	8.4	11.1	12.3
	NC	H	-	22	27	31	34	39	43	45
		V	-	-	25	28	31	36	41	43
Ø 200	Tot. Press. (mmAq)	H	2.1	2.7	3.5	4.3	5.4	7.2	9.5	10.7
		V	1.6	2.1	2.9	3.3	4.2	5.6	7.5	8.7
	NC	H	-	-	25	30	34	38	43	45
		V	-	-	24	28	31	35	40	42

- Throw is based on terminal velocities of 0.5m/s – 0.25m/s respectively.
- NC value is based on a room absorption of 10 dB, re 10<sup>-12</sup> watts.
- Dash (-) indicates NC less than 20.
- H indicates horizontal throw, V indicates vertical throw.

# LTD Light Troffer Diffuser

## LTD Performance Data LTD-D-T (600mm)

Inlet Size (mm)	Throw (m)	CMH	110	140	165	180	220	250	290	320
		H	1.2 - 2.7	1.8 - 3.0	2.0 - 3.3	2.3 - 3.7	2.4 - 4.3	2.5 - 4.7	2.7 - 4.9	3.0 - 5.5
		V	1.4 - 1.7	1.5 - 1.8	1.8 - 2	1.9 - 2.1	2.0 - 2.2	2.2 - 2.4	2.5 - 2.7	2.7 - 3.2
Ø 100	Tot. Press. (mmAq)	H	1.6	2.9	3.8	4.7	6.6	9.3	12.9	13.5
		V	1.2	2.6	3.7	4.3	6.0	8.4	11.9	12.4
	NC	H	-	23	28	32	36	41	45	46
		V	-	22	26	29	33	38	41	42
Ø 150	Tot. Press. (mmAq)	H	1.5	2.6	3.1	4.0	5.5	7.6	10.9	11.3
		V	1.2	2.2	2.7	3.7	5.2	6.9	10.2	10.7
	NC	H	-	23	28	32	34	41	45	47
		V	-	22	24	29	33	38	41	43
Ø 200	Tot. Press. (mmAq)	H	1.4	2.2	2.9	3.5	4.8	6.6	9.9	10.4
		V	1.1	1.8	2.6	3.1	4.7	6.0	8.9	9.7
	NC	H	-	-	28	32	36	41	45	46
		V	-	-	25	29	33	38	41	43

## LTD Performance Data LTD-D-T (1200mm)

Inlet Size (mm)	Throw (m)	CMH	220	250	290	320	360	430	500	540
		H	0.5 - 2.0	0.7 - 2.2	0.9 - 2.4	1.1 - 2.5	1.2 - 2.6	1.5 - 2.7	1.6 - 3.1	1.8 - 3.5
		V	1.2 - 1.4	1.3 - 1.6	1.5 - 1.8	1.6 - 1.9	1.8 - 2.0	2.0 - 2.3	2.1 - 2.5	2.2 - 2.7
Ø 100	Tot. Press. (mmAq)	H	3.5	4.7	5.5	7.0	8.5	11.8	17.2	17.8
		V	3.1	3.9	5.2	6.2	7.5	12.0	16.1	16.6
	NC	H	24	30	34	36	40	44	49	51
		V	21	25	30	33	36	41	44	48
Ø 150	Tot. Press. (mmAq)	H	2.5	3.2	4.0	5.2	6.4	9.4	12.8	13.9
		V	2.1	2.7	3.5	4.2	5.2	7.9	10.7	12.0
	NC	H	-	23	28	32	35	40	43	46
		V	-	21	26	29	32	36	41	44
Ø 200	Tot. Press. (mmAq)	H	1.8	2.3	3.0	3.8	4.8	6.8	8.9	10.4
		V	1.4	1.8	2.2	2.7	3.7	5.2	7.0	8.4
	NC	H	-	-	25	31	33	39	43	45
		V	-	-	24	29	30	36	40	42

- Throw is based on terminal velocities of 0.5m/s – 0.25m/s respectively.
- NC value is based on a room absorption of 10 dB, re 10<sup>-12</sup> watts.
- Dash (-) indicates NC less than 20.
- H indicates horizontal throw, V indicates vertical throw.

## LTD Order Code

Model	Sided	W	L	Inlet Location	Nominal Inlet Diameter
LTD	D	600	1200	S	200

Example : LTD - D- 600 x 1200 - S 200