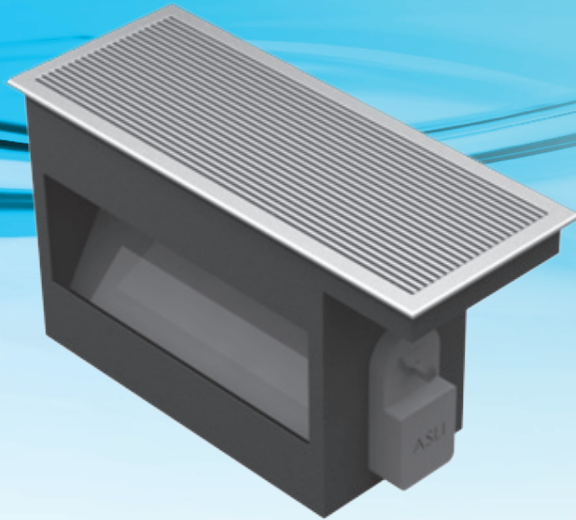


FGPB-A Rectangular Floor Grille



ASLI Linear Floor grille with actuator is designed for use in raised floor air distribution systems, where the floor cavity is used as a pressurized supply air plenum and is suitable to apply as perimeter ventilation. FGPB-A creates vertical up stream flow pattern directed by extruded deflection bar at center core. Extruded aluminum bars creates aesthetically appealing and excellent durability.

Materials

FGPB-A

Materials Diffuser core : Aluminum A6063

Plenum Box : 0.7mm thickness galvanized steel.

Insulation : 5mm P.E foam

Surface Finish

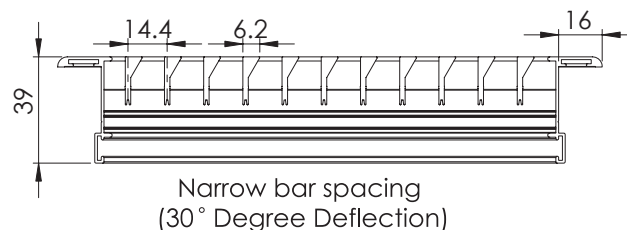
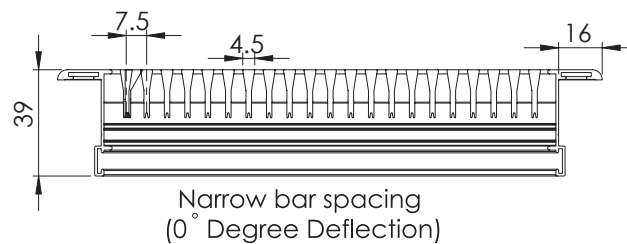
Anodized or powder coated

Standard size *Unit : mm*

Face size : 500 x 200

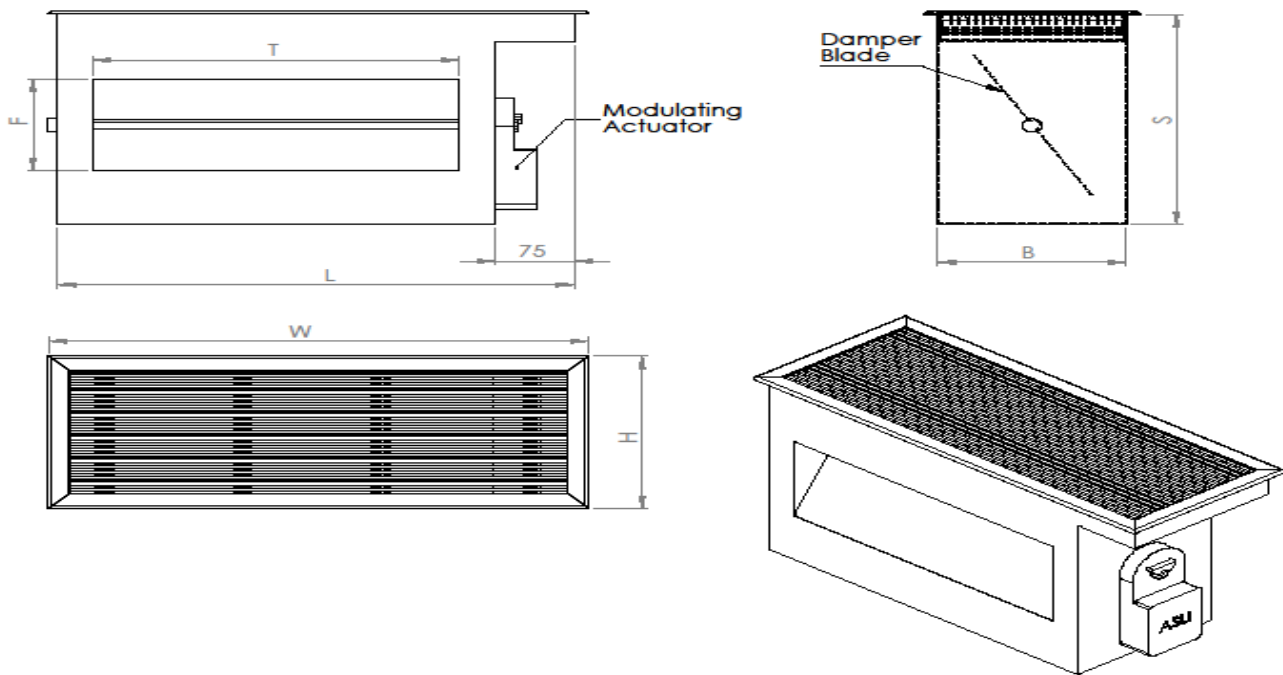
Features

- Plenum box with damper allows air volume control for optimum occupant comfort.
- Vertical air throw spread pattern enhances perimeter cooling.
- Aluminum core provides high strength to withstand load.
- Internal insulation to prevent condensation.
- Easy installation.



FGPB-A Rectangular Floor Grille

FGPB-A Construction Illustration



FGPB-A Physical dimension *Unit : mm*

Floor Grille Face size(WxH)	Rectangular Inlet		Plenum Width	Plenum Depth	Plenum Length
	T	F	L	S	B
500x200	340	120	480	275	175

FGPB-A Air flow performance data *Unit size face size (L x W) 500 x 200*

Air flow Rate(Cfm)	60	110	160	210
Vertical Projection(m)	0.9-2.7	2.0-3.0	2.7-4.0	3.7-5.3
NC	20	22	25	30
Static pressure(Pa)	5	10	15	20

- Terminal velocities are based on 0.5m/s and 0.25m/s respectively.
- Throw data is based on isothermal conditions.
- Throw data tested with damper fully open.
- NC value is based on room absorption of 10dB, re 10⁻¹² watts

FGPB-A Order Code

Model	Actuator	Size (mm)
FGPB	A	500x200

Example: FGPB-A-500x200