

DLR Double Layer Round Ceiling Diffuser



ASLI DLR is a diffuser with double layer round cone. Air is supplied horizontally into space through the side slots of the diffuser and mixes with room air.

Materials

DLR-T: 0.7 mm galvanized steel.
DLR-A: 0.7 mm aluminum.

Surface Finish

Baked white powder coated as standard.

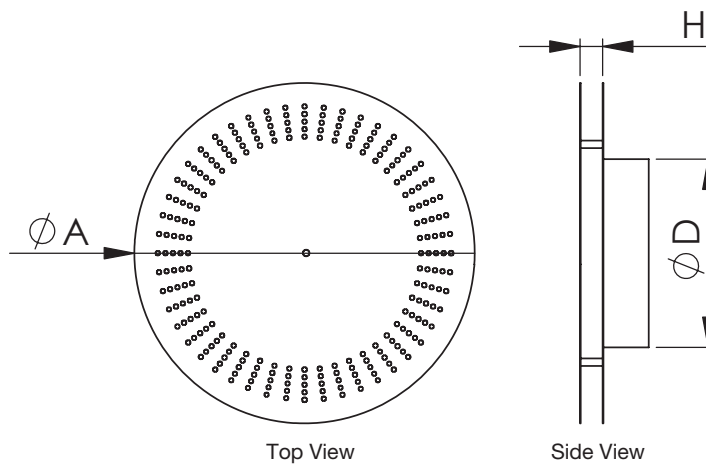
Standard size *Unit : mm*

Ø 450

Accessories

- C1 Radial fan blade damper
- C2 Crown damper

DLR Physical Dimension *Unit : mm*



Ø D (Neck Size)	Ø A (Face Size)	H (Height)
200, 250, 300	450	30

DLR Double Layer Round Ceiling Diffuser

DLR Performance Data

Neck Size (mm)	Neck Vel.(m/s)	2.0	2.5	3.0	3.5	4.0	4.5	5.0
Ø 200	CMH	226	283	339	396	452	509	566
	Total Press (mmAq)	0.9	1.0	1.4	1.9	2.3	3.0	3.7
	Throw (m)	1.7-2.9	2.3-3.5	2.5-3.9	2.9-4.2	3.0-4.5	3.3-4.6	3.4-4.7
	NC	-	-	-	22	25	28	31
Ø 250	CMH	353	442	530	619	707	795	884
	Total Press (mmAq)	1.0	1.4	2.1	2.9	3.7	4.7	5.9
	Throw (m)	2.3-3.9	2.5-4.2	3.3-5.0	3.5-5.3	3.9-5.5	4.4-5.8	4.5-6.3
	NC	-	20	22	26	30	32	35
Ø 300	CMH	509	636	764	891	1018	1145	1273
	Total Press (mmAq)	1.4	2.3	3.0	4.3	5.3	6.8	7.7
	Throw (m)	2.8-4.5	3.3-5.3	4.0-5.8	4.6-6.3	4.6-6.9	5.1-7.4	5.6-7.8
	NC	-	20	22	26	30	32	35

- Throw is based on terminal velocities of 0.5m/s-0.25m/s respectively.
 - NC value is based on a room absorption of 10 dB, re 10-12watts.
 - Dash (-) in space indicates NC value less than 20.

DLR Order Code

Model	Accessories	Face Size	Neck Size
DLR	C1	B 450	N 200

Example : DLR + C1 - B 450, N 200